



RiTA to ARX

Upgrading from RiTA to ARX – a profitable move

ASSA[®]
ASSA ABLOY

ASSA ABLOY, the global leader
in door opening solutions.



Upgrade to a modern system - reuse the materials you have already invested in

When Solid unveiled RiTA a good 20 years ago, the idea was to offer a high-quality system that could grow with the user and was based on the latest technology. There is no doubt that we succeeded: we have installed over 4,000 systems, the largest of which involve thousands of doors and tens of thousands of users. RiTA still fares well competitively, but a great deal has happened in the computer world since 1985, and it is not possible to keep building on old solutions forever.

Our successor to RiTA is called ARX. ARX is based on today's modern network solutions and programming languages. We have, of course, incorporated all the experience gained from our 20 years with RiTA, but we have also dared to think innovatively to create a system that has the features needed to meet current and future requirements in terms of IT policy, security, functionality and integratability in the best conceivable way.

ARX offers open, standardized interfaces for integration with other systems, centralized administratability for physically distributed systems, and functionality for ASSA's intelligent Hi-O door environments. Collectively, all these features provide a new system that will once again be able to grow with the user for many years to come. Need we mention that it's possible to upgrade a RiTA system to ARX without replacing your entire installation?

ARX access control systems

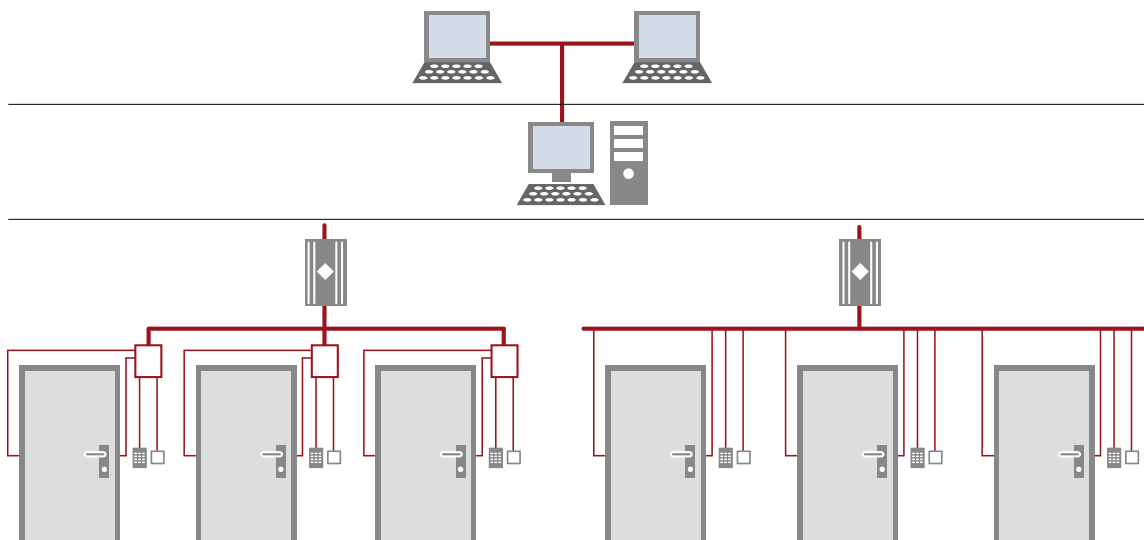
ARX entry control systems open up a host of new possibilities for the user. ARX has the total functionality needed to offer the security and convenience that we here at ASSA believe is an essential requirement for a modern access control system. In addition, its ability to provide complete and cost-effective solutions for integrating with burglar alarms, visitor registration systems and graphic displays makes an ARX access control system even more attractive as an investment for the future.

Clients - Replace

Server - Replace

Substations - Upgrade

Door environments – keep



We invite you to update your existing RiTA access control system to the next generation of security systems, the ARX Access Control System. You can read more about ARX Access Control Systems in our brochure, "ARX On-Line Access Control Systems," which is available from your dealer.

Keep all your existing door environment equipment
The bulk of the installation work associated with an on-line access control system pertains to the door environments. When you upgrade from RiTA to ARX, you can keep the existing products and cabling for the door environments. Scanners, locks and other door-related equipment work just as well in ARX as they do in RiTA. This is where the greatest savings are realized compared with replacing the entire system.

Database conversion

You can migrate users, cards and authorizations. An access control system contains a great deal of information, and your users, their cards and their authorizations can of course be exported from RiTA and imported into ARX.

RiTA and ARX together

If a customer does not wish to or cannot convert his entire installation at once, RiTA and ARX can be run together. The administrative tasks are handled in ARX, and the changes and additions are then transferred to RiTA automatically.

Services

ASSA offers assistance in both planning and proposal work in connection with requests for proposals and in converting existing RiTA databases. You can read more about these services in our guidelines for upgrading from RiTA to ARX.

Cost-effectiveness

Upgrading an existing RiTA system to an ARX access control system is demonstrably very cost-effective. The expenditures of time and money involved in the updating process are reduced significantly compared to replacing the entire system

thanks to the minimal installation work that is required, and because the personal and card data that have been accumulated in the existing system can be converted and transferred to ARX.

6300/6304

In addition to a new CPU card, the package for upgrading 6300 and 6304 central control units includes a connecting card with terminal blocks that are identical with the ones in the old control units. This makes the upgrade process very simple: disconnect the terminal blocks, unscrew the old card, install the new cards and connect the terminal blocks. The only new component that needs to be installed is a network cable for the CPU card. If there is more than one central control unit in the same location, up to four connecting cards can be handled by a single CPU card.

6416

With its separate DACs, the 6416 is more like an ARX central control unit, making it even easier to upgrade a 6416 to ARX. The upgrade package contains a new CPU card and the first loop card, with terminal blocks that are identical with the old ones. This makes the upgrade process extremely simple: disconnect the terminal blocks on the first loop card, unscrew the old CPU card and the first loop card, install the new cards, and connect the terminal blocks. The only new component that needs to be installed is a network cable for the CPU card.

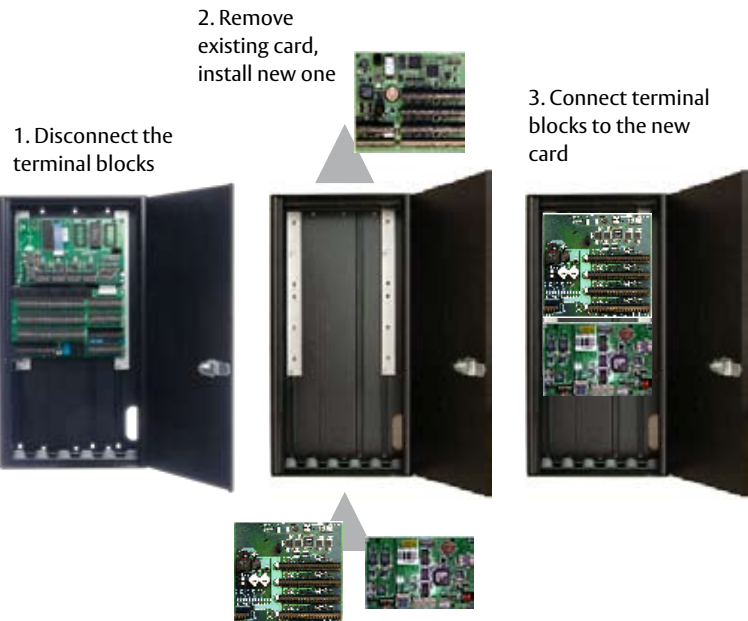
Everything is included

The packages include everything needed to upgrade a substation: cables, screws and door licenses for ARX. There will be no unpleasant surprises.

What will happen with RiTA?

ASSA will continue to maintain RiTA Access Control systems and provide support to RiTA customers, but we are focused on the future development of ARX Access Control Systems.

Upgrading 6300/6304



ASSA AB
P.O. Box 371
SE-631 05 Eskilstuna
Sweden

phone +46 (0)16 17 70 00
fax +46 (0)16 17 70 49

Customer support:
phone intl. +46 16 17 71 00
phone nat. 0771 640 640
fax +46 (0)16 17 73 72
e-mail: helpdesk@assa.se

www.assa.se

ASSA[®]

ASSA ABLOY

ASSA ABLOY, the global leader
in door opening solutions,
dedicated to satisfying end-user
needs for security, safety and
convenience.

