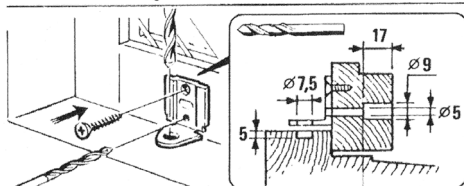
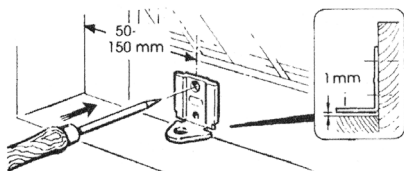
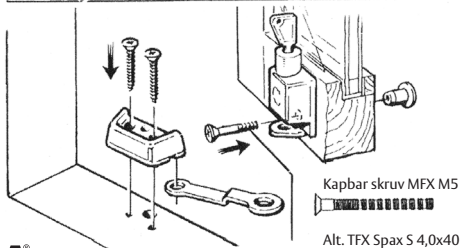
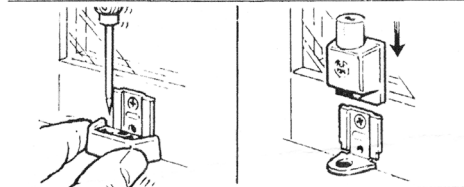


Monteringsanvisning

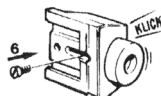
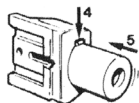
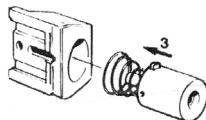
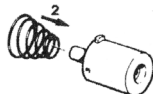
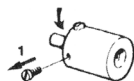
Fönsterlås ASSA 2830



Montera med genomgående M5-skrivar.
Kan även monteras med träskruv 4,0x40.



OBS! Lossa skruven försiktigt.
Vrid ej cylinder i förhållande
till tappen när skruven är lös.



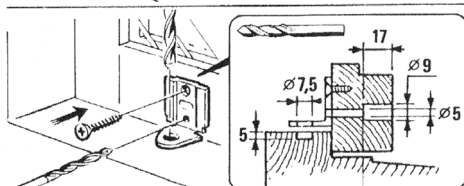
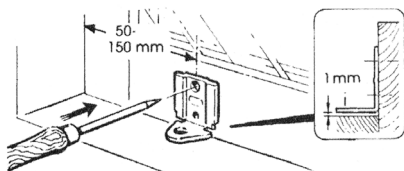
OEM9028.1112.112 / KT 864

ASSA[®]
ASSA ABLOY

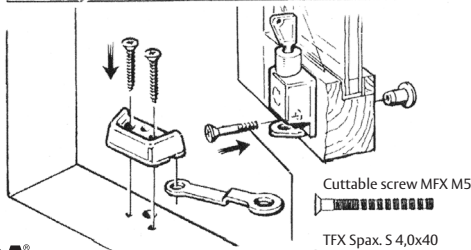
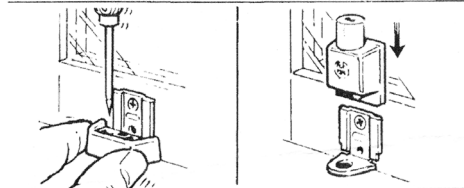
ASSA OEM AB, Box 121 99, 402 42 Göteborg
+46 (0)31-704 40 00, info.gbg@assaoem.se, www.assaoem.se

Fitting instructions

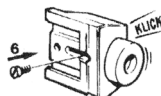
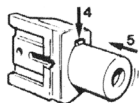
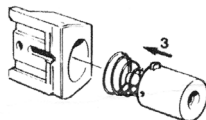
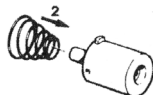
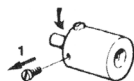
Window lock ASSA 2830



Fit with M5 screws that go through. Wood screws, 4,0x40, can also be used.



N.B. Loose the screw carefully. The cylinder should not be turned in relation to the pin when the screw is loosened.



OEM9028.1112.112 7 KT 864

ASSA[®]
ASSA ABLOY

ASSA OEM AB, Box 121 99, 402 42 Göteborg
+46 (0)31-704 40 00, info.gbg@assaoem.se, www.assaoem.se